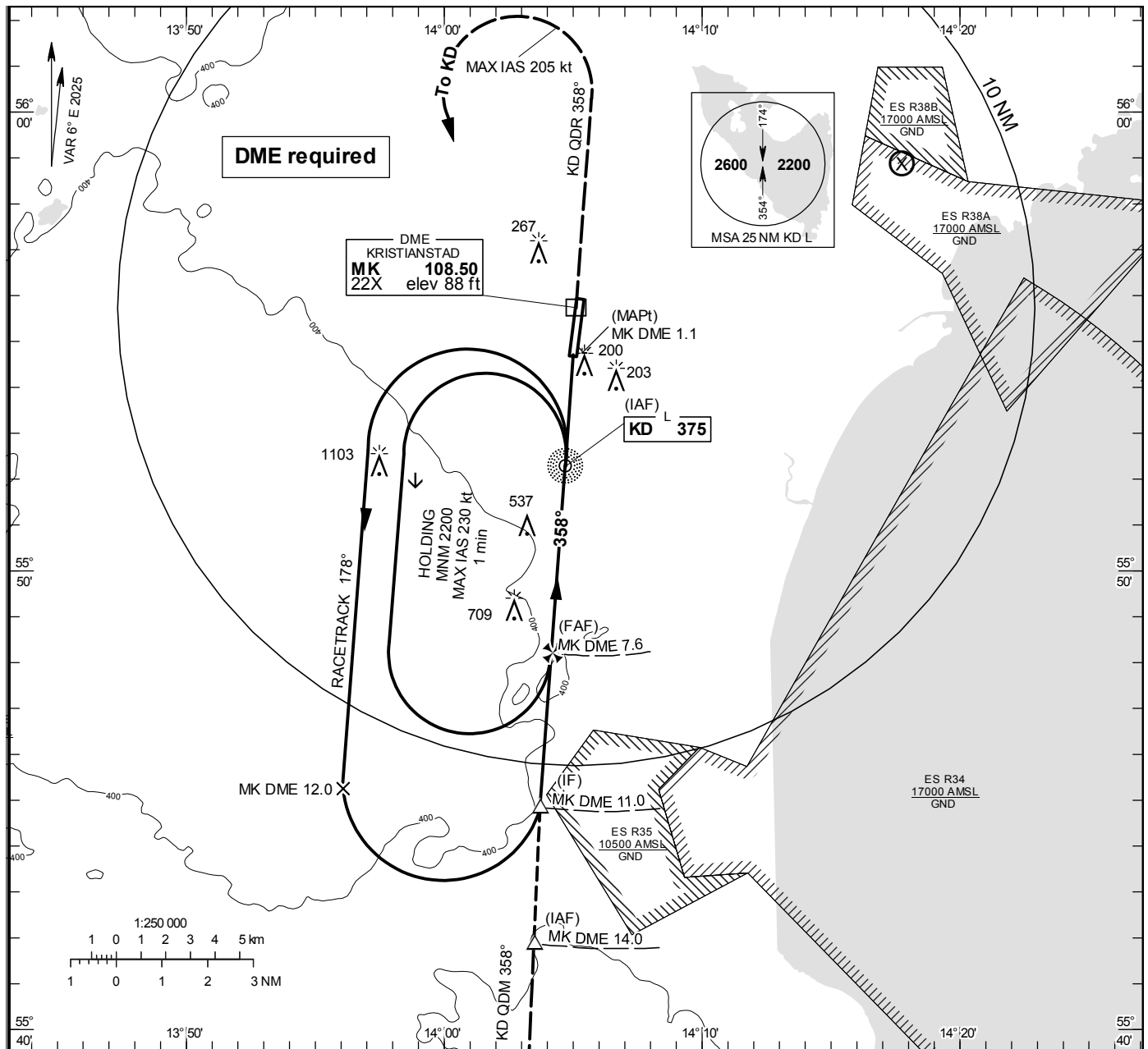


**KRISTIANSTAD****NDB RWY 01****INSTRUMENT  
APPROACH  
CHART – ICAO****THR ELEV 77 ft, AD ELEV 77 ft**

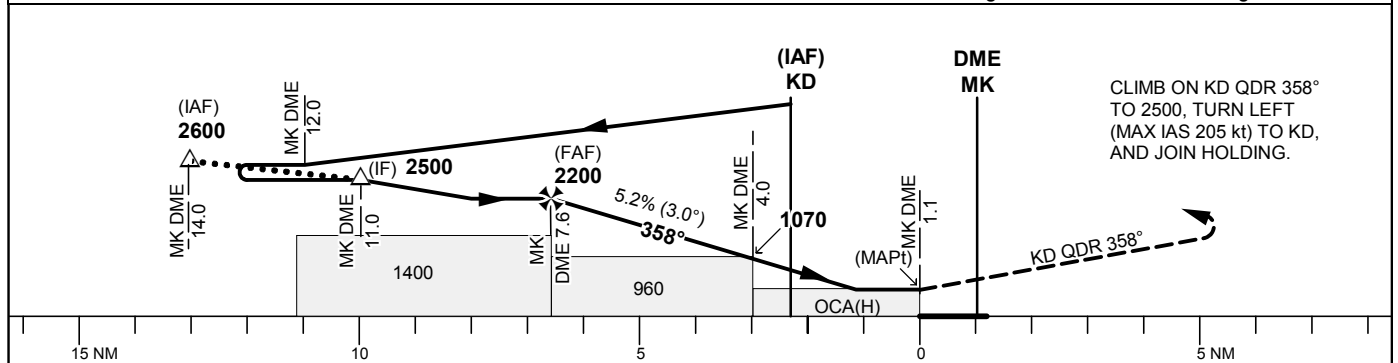
OCH are related to THR.  
Circling OCH are related to AD ELEV.  
BRG are MAG  
ALT. HGT and ELEV in ft.

**KRISTIANSTAD TOWER 129.355****TA 5000 ft AMSL**

No turns before MAPt

Final APCH line offset 3°

\*Timing not authorized for defining the MAPt



OCA (H)					Final approach		Distance FAF-MAPt 6.5 NM*				
Cat of ACFT	A	B	C	D	DME MK NM		7	6	5	4	3
Straight-in approach	450 (380)				ALT		2030	1710	1390	1070	750
Circling	570(500)	570(500)	940(870)	1500(1430)	GS	kt	80	100	120	140	160
Circling E RWY	500(430)	570(500)	940(870)	940(870)	Time	min:s	4:50	3:52	3:14	2:46	2:25
					Rate of descent	ft/min	425	530	635	745	850
											955

CHANGE: Editorial